

# The new Information Management Initiative (IMI) and its impact on FMs – IWFM's Technology SIG in conversation with NIMA IMI's Working Group

Wednesday 11 December, 12pm – 1pm

**iwfm**

WEBINAR SERIES

Navigating turbulent times



# Panellists



**Host**  
**Jenny Thomas**  
Director of  
Communication and  
Insight, IWFM



**Gordon Mitchell**  
Co-founder, Wholus



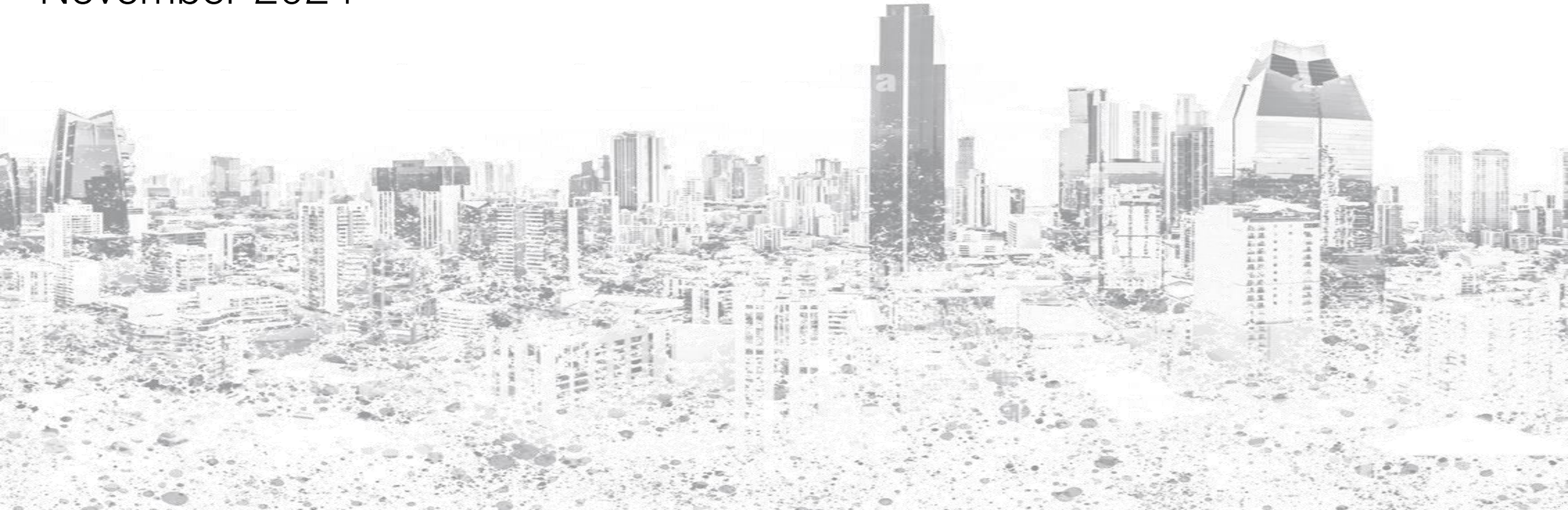
**Dan Rossiter**  
**FCIAT**  
Sector Lead, British  
Standards  
Institution



**Mats Broman**  
CEO, Service  
Works Global  
(SWG)

# Information Management Initiative Overview

November 2024



# The Existing IM Mandate

1

A “BIM Level 2” mandate was in effect within the UK from 2016.

2

This mandate was restated within the TIP Roadmap to 2030, with citations to the UK BIM Framework included within both the TIP Roadmap to 2030 and the Construction Playbook.



# The Problem Statement and Proposed Solution

- 1 Never formally mandated
- 2 Only focused on information, not 'data and information'
- 3 Doesn't cover all phases of the built and managed environment
- 4 The value and benefits of the mandate weren't clearly articulated
- 5 Doesn't help the user
- 6 Industry is still in early phases of digital adoption

## Proposed Solution

The UK  
Information  
Management  
Initiative (IMI)

## Overall Aim

“To enable the integration of data and information across the whole life cycle of the built and managed environment, enhancing collaboration, efficiency, safety and sustainability to meet the evolving needs of society, business and the environment.”

# Target Benefits

Delivering trusted data to support better whole life outcomes:

- 1 Enhanced competency
- 2 Improved regulatory compliance
- 3 Streamlined communication
- 4 Improved process efficiency
- 5 Standardised practice
- 6 Improved Safety
- 7 Enhanced Transparency
- 8 Informed and timely decision making
- 9 Risk reduction

Potential savings from IM: between £5.10 and £6.00 of direct labour productivity gains for every £1 invested and between £6.90 and £7.40 in direct cost savings

(KPMG/Atkins *The Value of Information Management in the construction and infrastructure sector 2021*)

# The Information Management Initiative (IMI)

## THE SECTOR WIDE DIRECTIVE – A Call for Action

WHY: *The vision and benefits*

WHAT: *Overarching Principles*      *Route Map*

## THE ORGANISATION LEVEL MANDATE

WHAT: *Overarching Rules & Outcomes*

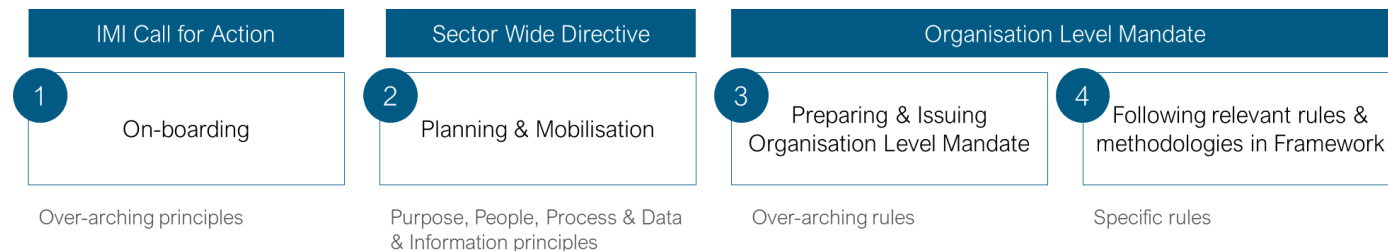
## THE IMI FRAMEWORK

WHO: *The Roles*

HOW: *Specific Rules*  
*Standards & Guidance*

## THE RESOURCES

HELP: *How-to Guides and Tools*



# IMI Launch & Beyond

The IMI was formally launched on 7<sup>th</sup> November at the nima autumn virtual conference

<https://nimavirtualconference.com/register/>



Taking the IMI to you:

Institute of Workplace and Facility Management

11 December 2024 12pm – 1pm [Zoom webinar](#)

## Overview

Join this webinar to explore the recently launched UK Information Management Initiative, focusing on the workplace and facilities management (WFM) and operation phase of the built environment. This initiative aims to unlock the potential of ESG (environmental, social and governance) outcomes and enhance operational performance through effective information management. Our expert panel will delve into key topics, providing awareness and guidance for how WFM can embrace this new era.



# IMI Launch & Beyond

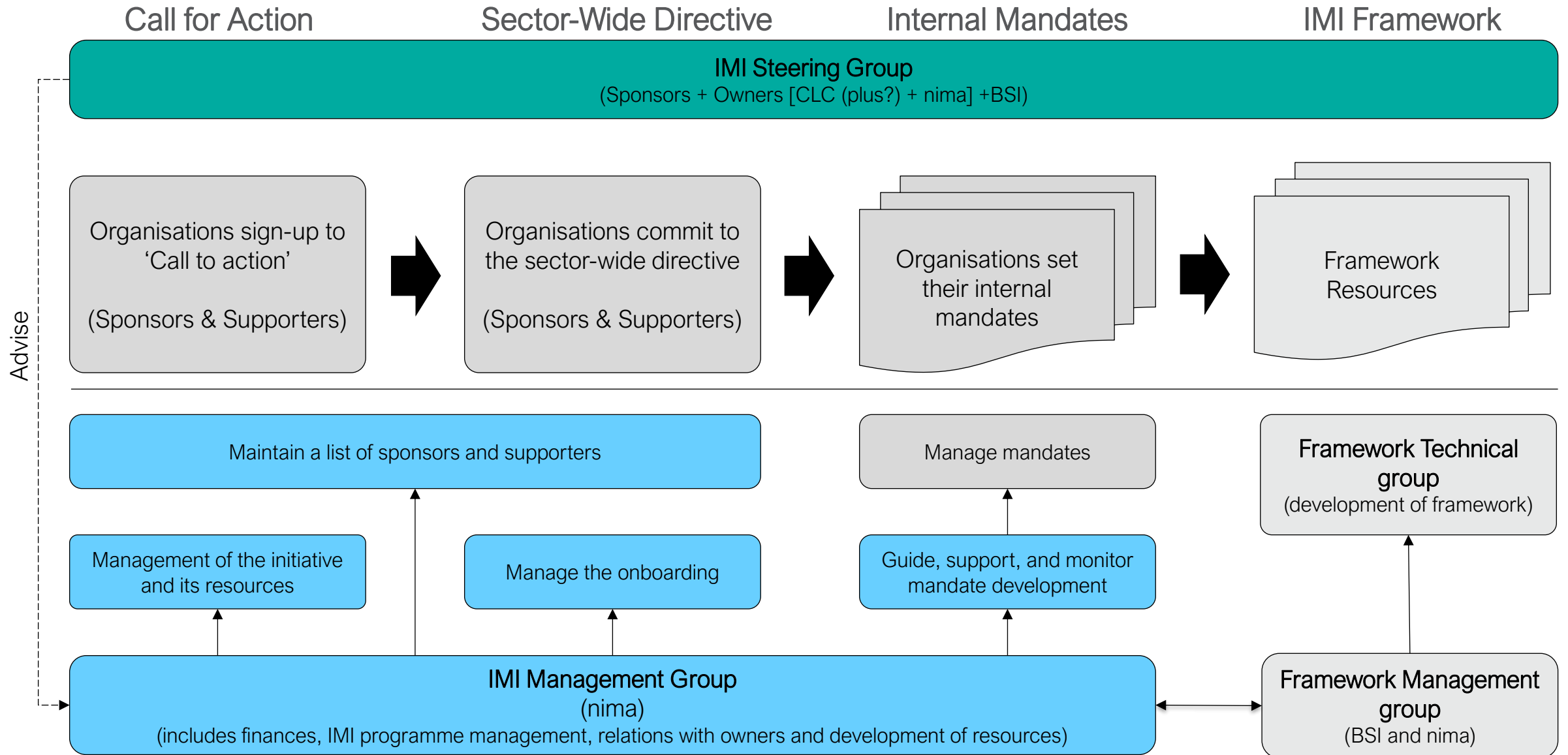
2030 TARGET: As a minimum, the built and managed environment sector will transition to specify, procure, deliver, store, and maintain data and information required for optimal whole life management and use of its assets.



The Framework	Re-brand UK BIM Framework to IMI Framework and update to enable the IMI and ongoing development of tools, integration of case studies and standards			Industry monitoring to assure compliance and benefits realisation		
Government Mandate	Engage HMG on Legal & Regulatory framework, collaborate on policy, regulation and legislation with a goal of a Government Mandate in Phase 3					
Funding & Sponsorship	Identify & engage key sponsors, signatories & early adopters to support funding and uptake				Long-Term Ownership Strategy	
IMI Development	Governance Setup	Pilot Programmes and Flagship Projects, expanding the early adopters as part of Phase 3			Continuous Improvement & feedback	
IMI Development	Phase 2 consultations and ongoing communications throughout implementation					



# The IMI Governance



The CPD number  
for today's event is:  
**9266312**

### Keep track of your CPD!

Visit our [iwfm.org.uk](http://iwfm.org.uk) or scan the  
QR code to log into your account  
and view 'MY CPD'

Track your development by  
adding to your records to mark  
your career progression as you  
train and attain new knowledge  
and understanding.



**iwfm**

WEBINAR SERIES

Navigating turbulent times



**iwfm**

**WEBINAR SERIES**

Navigating turbulent times

[iwfm.org.uk/insight](http://iwfm.org.uk/insight)