

GROUP MEMBERSHIP

# Take your employees further



**iwfm**  
Institute of Workplace  
and Facilities Management

# Crafting meaningful partnerships

**Your people embody your business. That's why the best way to grow your organisation is to develop your team in a way that supports both your short and long-term business objectives.**

As a professional body, we focus on the long-term advancement of the profession. When you become a partner, we will work with you to assess your goals and what you need to do to develop and maintain effective workplace and facilities teams throughout your business.

Our group membership scheme is designed to help you recognise, reward and support the professional development of your staff – building strong and effective teams.



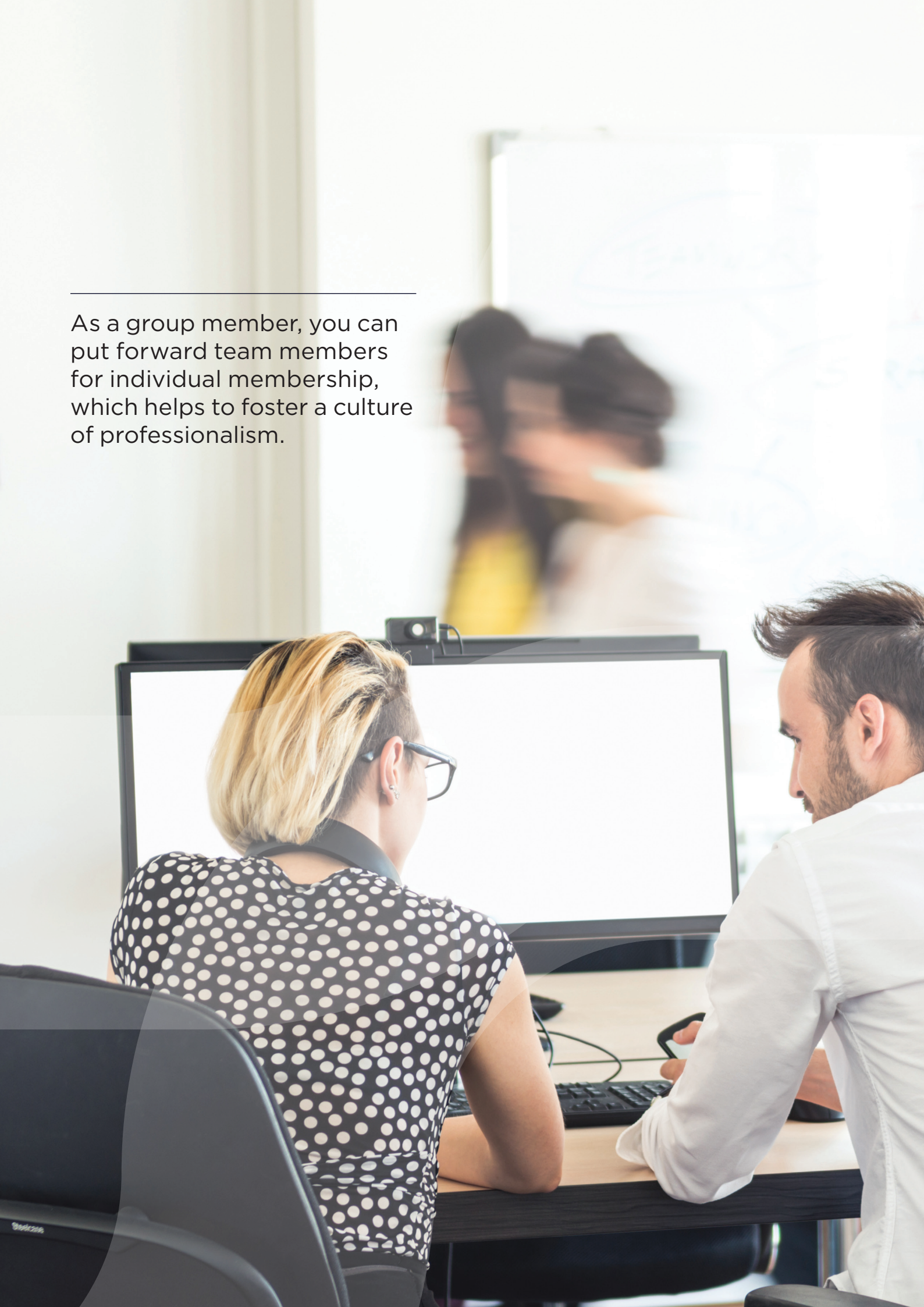
## WHAT TO EXPECT

We have developed a world-leading framework to develop your people against: the Workplace and Facilities Management Professional Standards, which map out the competencies required by your teams at every level.

Our professional development offering is industry-leading and comprises qualifications, training and membership, all of which work together to form our Development Pathway.

---

As a group member, you can put forward team members for individual membership, which helps to foster a culture of professionalism.



# Why become a group member?

## IWFM Membership Pathway



\*Membership grades are awarded upon assessment of the level and length of experience in facilities management and the qualifications held. They provide professional recognition at key stages as the individual progresses through their career.

## As a group member, you gain access to a variety of benefits, so you can create a better business.

The benefits of group membership include:

### Team development

You can use our Professional Development Framework to assess your employees' competencies, the results of which you can then use various development tools to further develop your team with our qualifications. The framework is flexible and can be tailored to your organisation's specific needs.

### Retention and recruitment

Individual membership works as an employee benefit. The scheme will assist your organisation to foster an environment of support and development, helping to retain staff and drive recruitment. Employees on the scheme will have full access to our range of member benefits.

### Knowledge and resource

As individual members, your employees will receive unlimited access to our library of resources, as well as exclusive insights and networking and development opportunities.

### Improved corporate profile

As a group member, your organisation clearly demonstrates a commitment to excellence, support and development of its staff and the delivery of best practice.

There are many more benefits, too.

Find out more at [iwfm.org.uk/membership](http://iwfm.org.uk/membership)



### GET A QUOTE

The cost of group membership depends on the number of employees you wish to sign up and at which membership grade. For a tailored quote, please contact [corporate@iwfm.org.uk](mailto:corporate@iwfm.org.uk)

# Training and flexible learning

## Invest in your people with bespoke training programmes with IWFM Academy.

Enrich your employees' knowledge with our training courses, which we can tailor to your organisation and any skills gaps you have.

Our standard courses include:

- Introduction to facilities management
- Facilities management strategy
- Operational space planning
- Effective property management
- Introduction to team leading
- Workplace leadership

And there are many more to help your employees keep up with best practice and advancements within the profession.

Our courses work with and around your employees. They can study online and login at work or home, or we can deliver a face-to-face course on-site with your organisation.

We also have a large portfolio of public courses for individuals, both face-to-face and online.

**Find out more at**  
[iwfm.org.uk/about/what-we-do/employers](http://iwfm.org.uk/about/what-we-do/employers)



### MAKE SURE YOUR STAFF ARE QUALIFIED

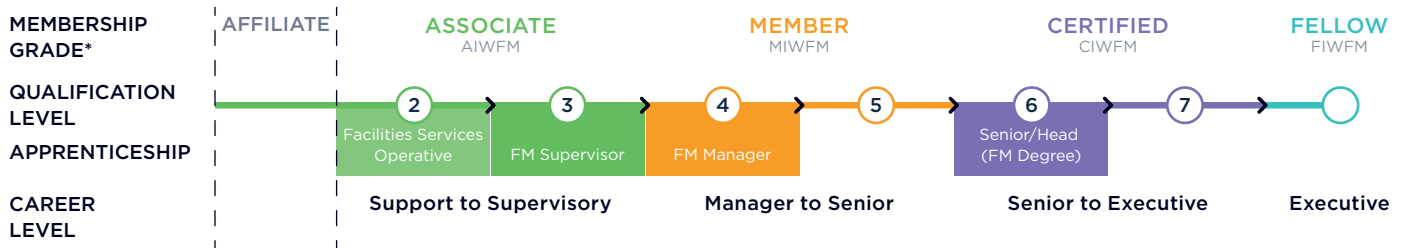
We also offer internationally recognised, regulated qualifications at all levels.

You can purchase an online learning solution from IWFM Direct. Options range from affordable bulk user packages to a branded, bespoke learning platform for your staff.

To discuss your bespoke learning platform, contact [qualifications@iwfm.org.uk](mailto:qualifications@iwfm.org.uk)

# Apprenticeships

## IWFM Apprenticeship Pathway



\*Membership grades are awarded upon assessment of the level and length of experience in facilities management and the qualifications held. They provide professional recognition at key stages as the individual progresses through their career.

## Fill skills gaps in your current and future workforce with dedicated apprentices.

Apprenticeships are an effective way to attain new employees that you can develop from the ground up. These training schemes are an excellent way to improve productivity.

Apprenticeships typically take between one and four years to complete, depending on the type of apprenticeship. They aim to produce well-rounded, productive employees with up-to-date knowledge as well as technical competence.

### Apprenticeships and IWFM

The UK Government’s initiative to reinvigorate the Apprenticeship system has seen IWFM trailblaze the design of new Workplace and Facilities Management Apprenticeships.

For every £1 you invest in apprenticeships, the UK Government will invest £2.

We can assist you to gain extensive value from the Apprenticeship Initiative.

**To speak to an advisor, please contact**  
corporate@iwfm.org.uk

**Or visit our Apprenticeships webpage at**  
iwfm.org.uk/professional-development/apprenticeships

---

For every £1  
you invest the  
UK government  
will invest £2.

# Join our community

**Now you understand why your organisation should become a group member, you can apply.**

To become a group member, identify your employees' grades and apply at [iwfm.org.uk/membership](http://iwfm.org.uk/membership)

If you're unsure how to progress, please contact us and speak to a team member.

**For further information, please contact**  
[corporate@iwfm.org.uk](mailto:corporate@iwfm.org.uk)  
+44 (0) 1279 712 675



## **ONGOING PROFESSIONAL DEVELOPMENT**

As your employees gain experience and acquire qualifications, you can boost their membership by upgrading to reflect their development.

**Find out more at**  
[iwfm.org.uk/membership](http://iwfm.org.uk/membership)



The Institute of Workplace and Facilities Management (IWFM) is the body for workplace and facilities professionals.

We exist to promote excellence among a worldwide membership community of around 14,000 and to demonstrate the value and contribution of workplace and facilities management more widely.

**Our Mission:** We empower and enable professionals to reach their full potential and have a rewarding, impactful career. Together we create the conditions for the profession to thrive through leading edge thinking, sharing best practice and upskilling our people.

**Our Vision:** As the pioneering workplace and facilities management body, our vision is to drive change for the future. To be the trusted voice of a distinct profession recognised, beyond the built environment, for its ability to enable people to transform organisations and their performance.

The IWFM was established in 2018. It builds on the proud heritage of 25 years as the British Institute of Facilities Management.

To find out more, please visit  
[iwfm.org.uk](http://iwfm.org.uk)

Contact us at  
[corporate@iwfm.org.uk](mailto:corporate@iwfm.org.uk)  
+44 (0) 1279 712 675

**IWFM**  
Charringtons House  
1st Floor South  
The Causeway  
Bishop's Stortford  
Hertfordshire CM23 2ER

**iwfm**  
Institute of Workplace  
and Facilities Management